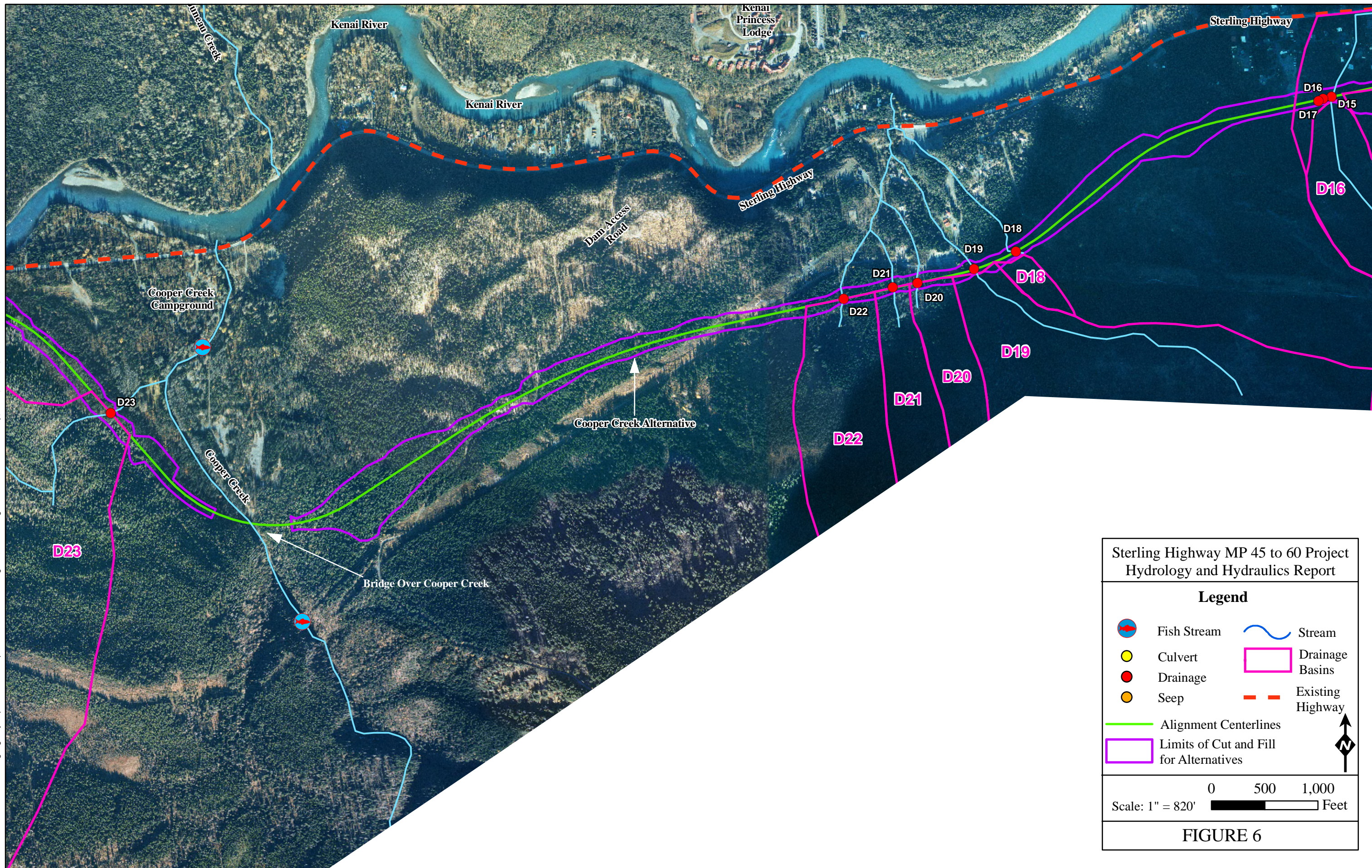


File: Z:\07072 DOT&P\170 Sterling Highway\Reports\H and H Report\GIS\MXD\H&H\Final\Figures.mxd Sources: AeroMap, USFS, ADF&G, HDR



**Sterling Highway MP 45 to 60 Project  
Hydrology and Hydraulics Report**

**Legend**

	Fish Stream		Stream
	Culvert		Drainage Basins
	Drainage		Existing Highway
	Seep		
	Alignment Centerlines		
	Limits of Cut and Fill for Alternatives		

Scale: 1" = 820'

**FIGURE 6**